

Market Report for the Week of June 03, 2019

Daily Averages

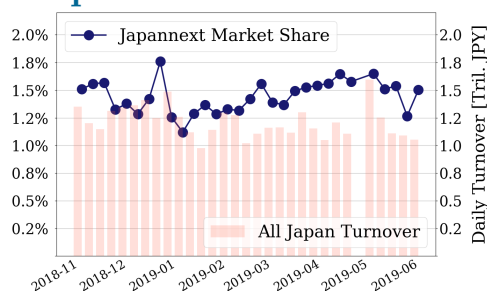
Universe	Value (JPY)	Volume	Share	PI (bps)	Symbols
All Market	76,802,649,649	69,712,408	3.12 %	3.89	2856
Large Cap	15,800,107,236	7,808,840	1.50 %	1.19	101
Mid Cap	39,701,063,702	31,153,940	5.20 %	3.71	399
Small Cap	11,903,966,542	21,375,740	3.78 %	6.57	1645
Mothers & Jasdaq	3,745,848,400	8,064,180	2.94 %	12.31	605
ETFs & REITs	5,651,663,769	1,309,708	2.76 %	2.06	107

All Market
3.1 %
Topix 100

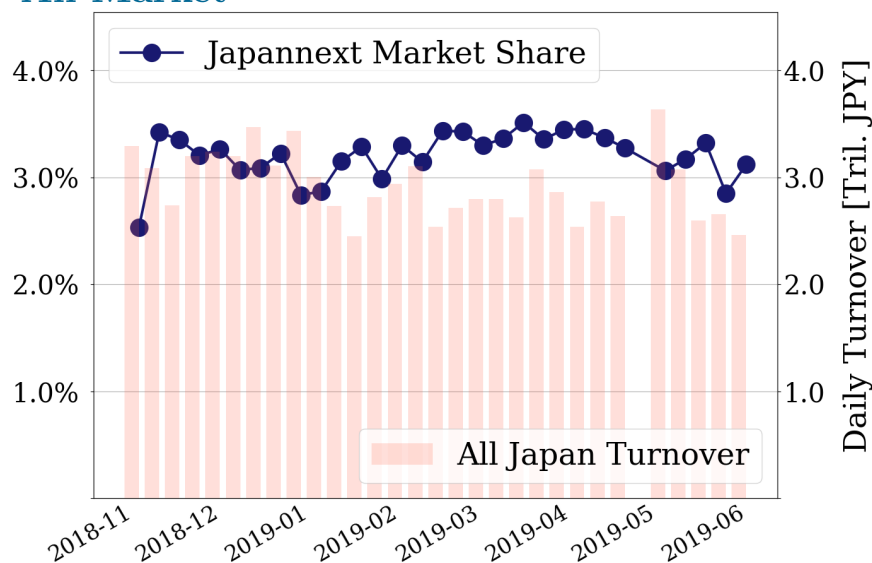
1.5 %
Nikkei 225

2.7 %

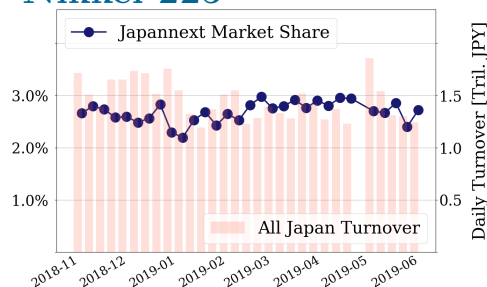
Topix 100



All Market



Nikkei 225



Top Stocks by Turnover

Stock	Value (JPY)	Share	PI (bps)
1570 NIKKEILV	7,758,008,883	1.94%	1.31
1357 NKDOUBLE	6,168,002,445	4.42%	1.96
9984 SOFTBNKG	5,908,278,540	1.20%	1.33
4689 YAHOO J	5,054,785,050	11.95%	9.96
6506 YASKAWA	4,719,961,100	6.30%	4.40

Top Stocks by Market Share

Stock	Value (JPY)	Share	PI (bps)
2703 LITE-ON	103,916,290	25.57%	12.06
4582 SYMBIO	251,548,480	17.42%	14.48
6628 ONKYO	241,211,220	16.95%	76.56
6472 NTN	1,400,492,960	16.33%	10.38
8572 ACOM	370,900,630	15.77%	8.40

Top Stocks by Price Improvement

Stock	Value (JPY)	Share	PI (bps)
3250 ADWORKS	116,215,910	6.62%	91.62
6628 ONKYO	241,211,220	16.95%	76.56
6740 JDI	518,266,400	9.14%	57.27
8585 OR.CORP	249,491,560	15.49%	29.54
8789 FINTECH	146,801,930	10.86%	26.08

Top Stocks by Savings

Stock	Value (JPY)	Share	Savings
4689 YAHOO J	5,054,785,050	11.95%	3,954,750
6740 JDI	518,266,400	9.14%	2,321,050
9424 JPN-COMM	3,457,792,520	7.24%	2,076,950
6506 YASKAWA	4,719,961,100	6.30%	1,409,500
6628 ONKYO	241,211,220	16.95%	1,222,810

- ▶ Analysis is based on SBI Japannext and Thomson Reuters data. Large Cap = TPX100, Mid Cap = TPX500 excl. TPX100, Small Cap = Section1 + Section2 excl. TPX500.
- ▶ All Japan Turnover = Japannext (J+X+U+N) + TSE (excl. Tostnet) + Chi-X (excl. Chi-Match, Chi-Select). Market Share = Japannext turnover / All Japan Turnover.
- ▶ Price Improvement (PI) and Savings (PI*volume) are calculated by comparing the execution price against the primary market's best bid for each sell or best offer for each buy at the point of execution from the taker's perspective. Reported PI is a value-weighted average. Names with weekly traded value less than 100,000,000 JPY are excluded from the rankings tables.

Top Stocks by Universe

Topix 100

Stock	Value (JPY)	Share	PI (bps)
8411 MIZUHO	1,508,989,340	2.21%	6.59
9201 JAL	1,007,699,050	3.08%	1.82
4502 TAKEDAP	2,977,207,770	2.4%	1.89
4568 1-SANKYO	1,097,901,060	1.05%	2.40
6861 KEYENCE	1,173,679,000	0.98%	2.43
8306 MUFG	1,158,230,680	0.98%	2.13
6758 SONY	1,381,081,040	0.9%	2.09
6501 HITACHI	1,291,201,640	1.79%	1.52
8316 SMFG	1,828,723,080	2.04%	1.36
8031 MITSUI	1,516,579,440	3.68%	1.05

Topix Mid400

Stock	Value (JPY)	Share	PI (bps)
7167 MEBUKIFG	777,610,740	15.26%	12.15
6472 NTN	1,400,492,960	16.33%	10.38
8410 SEVEN BK	754,825,630	13.05%	10.31
4689 YAHOO J	5,054,785,050	11.95%	9.96
2768 SOJITZ	1,510,490,180	12.55%	9.11
1893 P-OCEAN	616,973,980	13.71%	6.02
4005 SMICHEM	2,339,151,040	12.29%	6.37
5803 FUJIKRA	665,566,600	11.11%	6.73
7186 CONCRDIA	1,036,232,490	9.97%	7.40
9831 YAMDADK	1,369,718,850	12.01%	5.97

Small

Stock	Value (JPY)	Share	PI (bps)
8585 OR.CORP	249,491,560	15.49%	29.54
7238 AKEBONO	98,516,610	14.72%	23.83
6740 JDI	518,266,400	9.14%	57.27
3250 ADWORKS	116,215,910	6.62%	91.62
6632 JVCKW	316,105,380	15.56%	12.23
8714 SENSUIK	129,067,700	13.1%	13.47
2337 ICHIGO	330,548,950	14.11%	10.18
2353 NP-PARK	120,473,820	12.01%	14.51
5563 NP-DENK	99,196,230	11.66%	13.17
5480 NP-YAKN	402,168,330	11.91%	12.09

Mothers

Stock	Value (JPY)	Share	PI (bps)
8789 FINTECH	146,801,930	10.86%	26.08
4571 NANOCARI	160,153,820	9.18%	9.28
4596 KUBOTAPH	136,209,710	9.86%	8.22
3914 JIG-SAW	241,557,950	3.8%	11.99
4563 ANGES	438,815,680	7.6%	5.31
3930 HATENA	202,755,550	3.3%	11.19
6182 ROZETTA	376,050,100	3.74%	9.29
9450 FIBERGAT	144,837,700	2.52%	13.46
7779 CYBRDYNE	138,610,540	6.01%	5.30
4591 RIBOMIC	212,794,940	2.51%	12.30

JASDAQ

Stock	Value (JPY)	Share	PI (bps)
2315 CAICA	52,675,030	13.93%	119.56
6628 ONKYO	241,211,220	16.95%	76.56
7638 NEW ART	90,666,570	13.65%	81.20
2134 SUNCAPTL	48,632,680	20.27%	46.43
9263 VISIONAR	88,678,530	11.18%	58.68
4347 BR-MEDIA	75,080,640	13.16%	38.42
2388 WEDGE-HD	30,622,350	7.17%	68.20
8704 TRADERS	31,419,200	14.21%	34.29
2703 LITE-ON	103,916,290	25.57%	12.06
5216 KURAMOT	52,250,840	10.72%	25.95

Second Section

Stock	Value (JPY)	Share	PI (bps)
9318 ASIADVEVE	21,465,000	17.56%	550.72
3528 PROSPECT	12,341,600	19.99%	262.48
8925 ARDEPRO	17,475,190	24.62%	107.60
6993 DAIKOKYA	14,423,600	12.32%	108.11
6835 ALLIEDHD	24,488,430	13.87%	28.24
6731 PIXELA	33,929,780	12.97%	27.37
3071 STREAM	22,387,630	10.71%	25.61
7647 ONTSU	18,728,620	1.85%	137.41
3113 OAK	20,593,360	11.23%	16.68
6699 DIA HD	25,232,390	3.41%	51.96

ETFs & REITs

Stock	Value (JPY)	Share	PI (bps)
8963 INV	985,900,040	11.59%	4.39
1356 TPXBEAR2	267,603,728	9.44%	1.91
1365 DW 225LV	234,479,007	8.15%	2.09
8976 DAIWAOF	299,657,000	4.27%	3.73
3296 NP REIT	264,717,300	5.07%	3.00
8986 J RENTAL	178,358,140	5.48%	2.68
3269 ADR	326,229,000	4.89%	2.93
8952 JRE	573,764,100	3.69%	3.65
1459 RK 225DI	552,014,800	5.94%	2.25
8985 JHR	442,865,900	5.31%	2.46

- ▶ Best stocks are selected based on a combined score of turnover, market share and price improvement, and are listed here in order to illustrate a sample of stocks that trading on JNX venues can deliver benefits to our clients.
- ▶ The weights used in choosing the best stocks depend on the universe.