

Market Report for the Week of September 02, 2019

Daily Averages

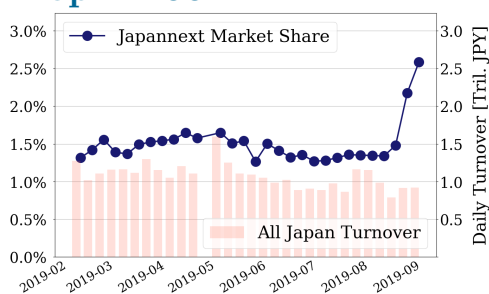
Universe	Value (JPY)	Volume	Share	PI (bps)	Symbols
All Market	103,506,220,568	80,611,949	4.60 %	3.75	2886
Large Cap	23,831,187,900	8,968,280	2.59 %	1.18	101
Mid Cap	44,492,076,546	32,576,280	6.43 %	3.65	398
Small Cap	16,601,022,376	22,156,900	5.90 %	5.85	1436
Mothers & Jasdaq	6,091,769,910	10,199,960	6.09 %	10.06	621
ETFs & REITs	10,756,500,036	2,847,656	4.66 %	2.19	99

All Market
4.6 %

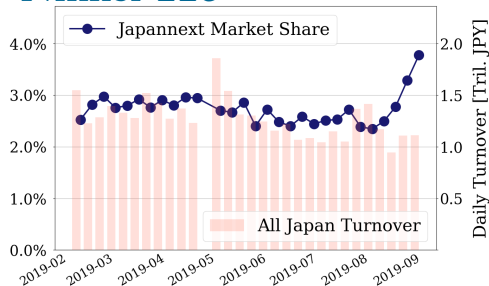
Topix 100
2.6 %

Nikkei 225
3.8 %

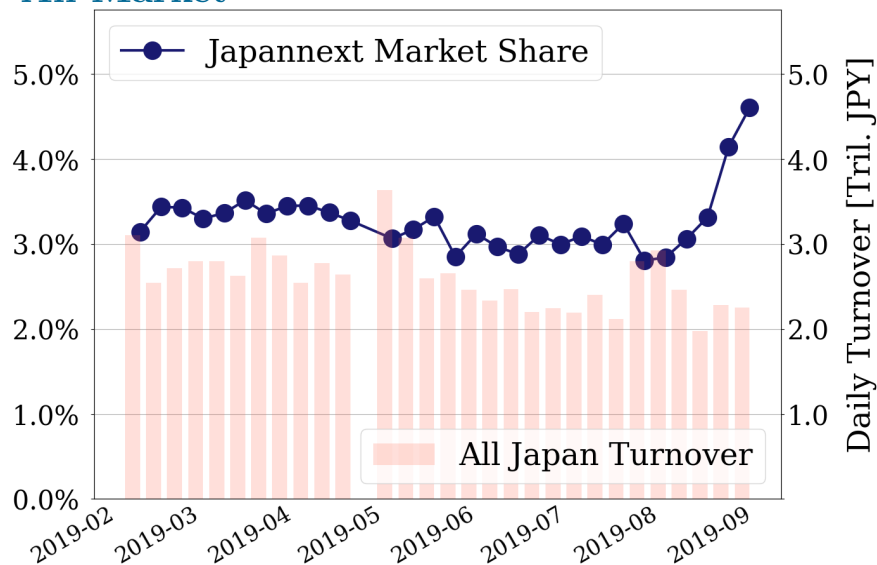
Topix 100



Nikkei 225



All Market



Top Stocks by Turnover

Stock	Value (JPY)	Share	PI (bps)
1570 NIKKEILV	20,837,464,291	4.22%	1.66
1357 NKDOUBLE	13,379,935,095	8.52%	2.80
7974 NINTEND	11,880,442,500	3.81%	1.44
9983 FASTRET	8,370,422,680	3.74%	1.65
9984 SOFTBNKG	8,160,709,700	3.00%	1.30

Top Stocks by Market Share

Stock	Value (JPY)	Share	PI (bps)
2767 FIELDS	114,157,330	49.42%	30.90
2353 NP-PARK	106,148,020	20.54%	15.90
6472 NTN	1,239,231,430	19.55%	11.20
8410 SEVEN BK	572,730,210	18.81%	11.66
6628 ONKYO	278,043,830	18.54%	72.82

Top Stocks by Price Improvement

Stock	Value (JPY)	Share	PI (bps)
9263 VISIONAR	148,238,540	17.99%	109.24
6628 ONKYO	278,043,830	18.54%	72.82
6740 JDI	307,496,180	11.29%	57.27
2767 FIELDS	114,157,330	49.42%	30.90
4347 BR-MEDIA	117,256,640	14.34%	30.75

Top Stocks by Savings

Stock	Value (JPY)	Share	Savings
4689 YAHOO J	4,628,025,830	12.93%	3,775,300
1570 NIKKEILV	20,837,464,291	4.22%	2,496,454
1357 NKDOUBLE	13,379,935,095	8.52%	2,381,355
8585 OR.CORP	789,887,270	15.70%	1,700,220
6740 JDI	307,496,180	11.29%	1,376,710

- ▶ Analysis is based on SBI Japannext and Thomson Reuters data. Large Cap = TPX100, Mid Cap = TPX500 excl. TPX100, Small Cap = Section1 + Section2 excl. TPX500.
- ▶ All Japan Turnover = Japannext (J+X+U+N) + TSE (excl. Tostnet) + Chi-X (excl. Chi-Match, Chi-Select). Market Share = Japannext turnover / All Japan Turnover.
- ▶ Price Improvement (PI) and Savings (PI*volume) are calculated by comparing the execution price against the primary market's best bid for each sell or best offer for each buy at the point of execution from the taker's perspective. Reported PI is a value-weighted average. Names with weekly traded value less than 100,000,000 JPY are excluded from the rankings tables.

Top Stocks by Universe

Topix 100

Stock	Value (JPY)	Share	PI (bps)
7974 NINTEND	11,880,442,500	3.81%	1.44
9983 FASTRET	8,370,422,680	3.74%	1.65
6758 SONY	4,118,847,040	2.46%	1.62
6861 KEYENCE	3,868,402,000	4.17%	1.87
8316 SMFG	2,303,408,920	3.43%	1.50
4661 OLC	1,789,518,200	3.96%	1.46
8411 MIZUHO	1,655,473,140	2.74%	6.40
6501 HITACHI	1,510,867,970	2.76%	1.46
6098 RECRUIT	1,434,650,200	1.98%	1.74
4568 1-SANKYO	1,423,722,780	2.29%	1.74

Topix Mid400

Stock	Value (JPY)	Share	PI (bps)
4689 YAHOO J	4,628,025,830	12.93%	11.05
4005 SMICHEM	1,868,043,760	12.28%	6.07
8848 LEOPC21	1,619,447,230	10.28%	7.87
2768 SOJITZ	1,405,577,270	14.31%	10.76
6472 NTN	1,239,231,430	19.55%	11.20
7211 MMC	1,154,682,310	12.79%	6.28
1893 P-OCEAN	900,308,310	14.44%	5.12
7186 CONCRDIA	894,723,740	13.63%	8.30
8515 AIFUL	761,186,700	15.99%	13.26
8593 MUFLEASE	659,742,980	14.51%	5.15

Small

Stock	Value (JPY)	Share	PI (bps)
9424 JPN-COMM	2,131,097,660	14.77%	12.60
8585 OR.CORP	789,887,270	15.7%	27.39
7004 HIT-ZOS	453,944,080	14.49%	9.42
6740 JDI	307,496,180	11.29%	57.27
9412 SKYPER J	231,487,390	16.67%	7.44
6727 WACOM	217,479,310	16.88%	8.34
5563 NP-DENK	142,796,720	17.68%	20.66
2767 FIELDS	114,157,330	49.42%	30.90
5912 OSJBHD	110,114,260	15.98%	12.05
2353 NP-PARK	106,148,020	20.54%	15.90

Mothers

Stock	Value (JPY)	Share	PI (bps)
6067 IMPACT	781,378,980	9.85%	6.29
4571 NANOCARI	453,038,100	11.56%	8.41
6027 BENG04CM	421,564,700	9.46%	6.98
7829 SAMANTHA	351,401,210	4.03%	17.97
6095 MEDPEER	328,795,790	10.98%	6.01
3911 AIMING	265,554,400	8.81%	10.63
4425 KUDAN	264,707,700	7.59%	11.18
3906 ALBERT	238,393,700	8.91%	9.20
4596 KUBOTAPH	216,409,720	15.73%	8.88
3989 SHARINGT	192,917,840	7.12%	12.40

JASDAQ

Stock	Value (JPY)	Share	PI (bps)
6628 ONKYO	278,043,830	18.54%	72.82
9263 VISIONAR	148,238,540	17.99%	109.24
4347 BR-MEDIA	117,256,640	14.34%	30.75
2666 AUTWAVE	93,572,660	10.46%	14.19
7612 NUTS	80,326,200	14.18%	17.23
8946 ASIANSTR	70,166,860	14.84%	24.62
3323 RECOMM	60,405,880	24.3%	20.68
4978 REPROCEL	55,813,310	13.76%	12.56
2315 CAICA	40,214,840	17.9%	147.79
7638 NEW ART	33,692,520	17.15%	79.03

Second Section

Stock	Value (JPY)	Share	PI (bps)
3747 INTERTRD	1,040,201,590	12.78%	13.24
6366 CHIYODA	337,729,280	15.35%	7.90
3825 REMIX	150,043,760	15.23%	13.68
3823 ACRODEA	118,297,730	14.83%	10.15
6731 PIXELA	42,694,430	15.83%	63.42
6993 DAIKOKYA	32,911,200	13.82%	106.84
6835 ALLIEDHD	27,827,540	11.05%	31.15
8925 ARDEPRO	23,041,180	17.73%	114.23
8226 RIKEI	20,271,510	18.49%	12.40
5952 AMATEI	13,708,950	17.19%	17.32

ETFs & REITs

Stock	Value (JPY)	Share	PI (bps)
1357 NKDOUBLE	13,379,935,095	8.52%	2.80
1459 RK 225DI	1,038,544,200	12.36%	3.83
8985 JHR	1,007,113,860	9.06%	2.54
8963 INV	893,142,820	7.24%	3.97
8952 JRE	631,005,800	4.42%	3.14
3269 ADR	492,905,650	6.75%	2.81
3279 API	410,341,800	5.79%	4.42
3476 R MIRAI	302,535,530	11.72%	5.32
3226 ACCOMMO	282,190,700	5.0%	2.99
8986 J RENTAL	259,052,930	7.23%	2.80

- ▶ Best stocks are selected based on a combined score of turnover, market share and price improvement, and are listed here in order to illustrate a sample of stocks that trading on JNX venues can deliver benefits to our clients.
- ▶ The weights used in choosing the best stocks depend on the universe.